

**MC CARRAN INTL (LAS)(KLAS) 5 S UTC-8(-7DT) N36°04.80' W115°09.13'****LAS VEGAS**

2181 B LRA Class I, ARFF Index E NOTAM FILE LAS MON Airport

**H-4I, L-7E****RWY 08L-26R:** H14515X150 (CONC-GRVD) S-120, D-250,**IAP, AD**

2D-504, 2D/2D2-1014 PCN 77 R/B/W/T HIRL

**RWY 08L:** PAPI(P4L)—GA 3.0° TCH 76'. Thld dsplcd 2139'. Hangar. 1.1% down.**RWY 26R:** MALS. PAPI(P4L)—GA 3.0° TCH 84'. Thld dsplcd 1399'. 0.9% up.**RWY 08R-26L:** H10526X150 (CONC-GRVD) S-120, D-250,

2D-633, 2D/2D2-1120 PCN 100R/B/W/T HIRL

**RWY 08R:** REIL. PAPI(P4L)—GA 3.0° TCH 61'. Pole. 1.2% down.**RWY 26L:** MALS. PAPI(P4L)—GA 3.0° TCH 84'. 0.9% up.**RWY 01R-19L:** H9771X150 (CONC-GRVD) S-120, D-250, 2S-175,

2D-550, 2D/2D2-1120 PCN 100R/B/W/T MIRL

**RWY 01R:** REIL. PAPI(P4L)—GA 3.0° TCH 76'. Thld dsplcd 491'.

Railroad. Rgt tfc. 1.1% down.

**RWY 19L:** REIL. PAPI(P4L)—GA 3.0° TCH 75'. Thld dsplcd 878'.

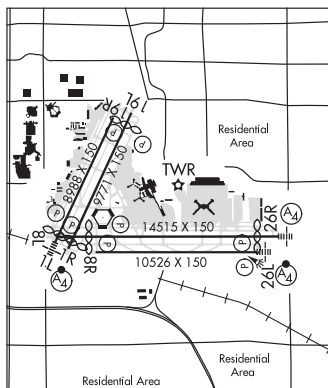
Pole. 0.9% up.

**RWY 01L-19R:** H8988X150 (CONC-GRVD) S-120, D-250, 2S-175,

2D-550, 2D/2D2-1120 PCN 100R/B/W/T HIRL

**RWY 01L:** MALS. PAPI(P4L)—GA 3.4° TCH 63'. Thld dsplcd 587'.

Railroad. 1.1% down.

**RWY 19R:** REIL. PAPI(P4L)—GA 3.0° TCH 80'. Fence. Rgt tfc. 1.0% up.**RUNWAY DECLARED DISTANCE INFORMATION****RWY 01L:**TORA-8988 TODA-8988 ASDA-8988 LDA-8401**RWY 01R:**TORA-9771 TODA-10168 ASDA-9273 LDA-8782**RWY 08L:**TORA-14512 TODA-15098 ASDA-14098 LDA-11960**RWY 08R:**TORA-10525 TODA-10525 ASDA-10525 LDA-10525**RWY 19L:**TORA-9771 TODA-10171 ASDA-9681 LDA-8803**RWY 19R:**TORA-8988 TODA-9400 ASDA-8400 LDA-8400**RWY 26L:**TORA-10525 TODA-10525 ASDA-10525 LDA-10525**RWY 26R:**TORA-14512 TODA-15035 ASDA-14035 LDA-12639**SERVICE:** S4 FUEL 100, 100LL, JET A1+ OX 1, 2, 3

**AIRPORT REMARKS:** Attended continuously. Large number of birds and bats invof arpt btn SS and SR. Lgtd golf range 1400' S of Rwy 01L-19R and Rwy 01R-19L. Extv glider/soaring ops wkends and hol, RR-SS, LAS R187/020, alts up to but not including FL180. Gliders remain clear of the TCA but otherwise opr within the entire SW quadrant of the TCA Veil. Acft may experience reflection of sun from glass hotels lctd NW of arpt. Reflection may occur at various alts, hgdgs and distances from arpt. Numerous helicopter ops on west side of arpt. Acft using full length dep on Rwy 08L use minimal power til passing the pwr-up point on rwy. Pwr-up point is 348' east of blast pad and marked with sign and std markings for beginning of rwy. Turbojet deys not permitted on Rwy 01R-19L or Rwy 01L-19R 0400-1600Z†. Exception for wx or opr necessity. All non-std rwy ops PPR from Dept of Avn. ASDE-X in use. Operate transponders with altitude reporting mode and ADS-B (if equipped) enabled on all airport surfaces. Acft taxiing westbound on Twy B near Twy E use caution not to enter the rwy on Twy Y, acft taxiing westbound on Twy W near Twy E use care not to enter the rwy on Twy U. Acft with wingspan greater than 135 ft PPR from Dept of AVN to use Twy H. All acft ctc ramp ctl on freq 124.4 for ops at A, B, and C gates, ctc ramp ctl on freq 127.9 for ops at D and E gates and cargo ramp prior to entering ramp or pushing back from gate or parking spot. Acft opr near the int of Twys S, D, G and the N end of Twy Z should be alert as there are closely aligned twy cntrlns and radius turns. Acft that dep full length of Rwy 01L and Rwy 08L must hold at the same hold line, as there is no room to hold btn the rwy ends and such acft should verify that they are on the correct rwy. Acft dep Rwy 19R use minimal power passing the rwy thld. Rwy 19R thld has std rwy markings and is 780' S of the blast pad. Ldg Rights Arprt (LRA), Ldg rights arprt. Customs avbl to general aviation acft Mon-Sat 1600-0700Z†, Sun 1600-2000Z† and 0100-0700Z†. General aviation CBP reservations are required to be submitted a minimum of 12 hrs in advance (other conditions apply). Reservations must be made online at [www.mccarran.com/gacbp](http://www.mccarran.com/gacbp). Questions can be directed to CBP559@mccarran.com. General aviation acft using the west side customs facility must ctc ramp ctl 124.4. General aviation parking very ltd. For parking availability ctc either FBO 702-736-1830 or 702-739-1100. Rwy status lgts are in ops. Tiedown fee. General aviation customs and immigration lctd west side of fld btn FBO's. Flight Notification Service (ADUCS) avbl. NOTE: See Special Notices—Grand Canyon Special Flight Rules Area.

**AIRPORT MANAGER:** (702) 261-4525**WEATHER DATA SOURCES:** ASOS (725) 600-7124 TDWR.**COMMUNICATIONS:** D-ATIS 132.4 702-736-0950 UNICOM 122.95

Ⓡ LAS VEGAS APP CON 125.025 (West) 125.6 (East)

Ⓡ LAS VEGAS DEP CON 125.9 133.95

**LAS VEGAS TOWER** 119.9 (Rwy 08L-26R and Rwy 08R-26L) 118.75 (Rwy 01L-19R and Rwy 01R-19L)**GND CON** 121.9 (West of Rwy 01R-19L) 121.1 (East of Rwy 01R-19L) **RAMP CON** 124.4 (Terminal A, B, C) 127.9 (D, E Gates and Cargo Ramp) 130.0(A, B, C, D, E Gates) **CLNC DEL** 118.0**CPDLC** (LOGON KUSA)**CONTINUED ON NEXT PAGE**

SW, 26 MAR 2020 to 21 MAY 2020