

---

**MANASSAS RGNL/HARRY P DAVIS FLD** (See WASHINGTON on page 52)
 

---

**RONALD REAGAN WASHINGTON NATIONAL** (See WASHINGTON on page 53)
 

---

**SOUTH CAPITOL STREET HELIPORT** (See WASHINGTON on page 54)
 

---

**WASHINGTON**
**MANASSAS RGNL/HARRY P DAVIS FLD** (HEF)(KHEF) 28 WSW UTC-5(-4DT)

**WASHINGTON**

N38°43.26' W77°30.91'

192 B TPA—See Remarks LRA NOTAM FILE HEF

**RWY 16L-34R:** H6200X100 (ASPH-GRVD) S-50, D-140 HIRL

**RWY 16L:** MALSR. PAPI(P4L)—GA 3.0° TCH 55'.

**RWY 34R:** MALSF. PAPI(P4L)—GA 3.0° TCH 40'. Rgt tfc.

**RWY 16R-34L:** H3715X100 (ASPH) S-12.5 MIRL 0.3% up N

**RWY 16R:** REIL. PAPI(P2L)—GA 3.0° TCH 50'. Rgt tfc.

**RWY 34L:** REIL. PAPI(P2L)—GA 3.0° TCH 40'.

**SERVICE:** S4 FUEL 100LL, JET A OX 1, 2, 4 LGT When ATCT clsd

ACTIVATE HIRL Rwy 16L-34R, MALSR Rwy 16L, MALSF Rwy 34R, MIRL Rwy 16R-34L, and REILS Rwy 16R and Rwy 34L—CTAF.

**AIRPORT REMARKS:** Attended 1130-0330Z†. Birds and deer on and invof arpt. Helicopter ops over residential areas blo 1000' should be avoided, ctc arpt manager 703-361-1882 for information. TPA—1200(1008) single engine and light twin acft, 1500(1308) med twin and turboprop acft, 1000(808) helicopter. U.S. Customs avbl Mon-Sun 1000-0400Z†. Call Command Center 703-661-2800 for appointment. 24 hr notice required. All weekend flights must be arranged before 2200Z† on Fri before. Terminal apron for transient and US Customs parking.

**AIRPORT MANAGER:** 703-361-1882

**WEATHER DATA SOURCES:** AWOS-3PT (703) 361-6160

**COMMUNICATIONS:** CTAF 133.1 ATIS 125.175 (703) 361-6160

 Ⓡ **POTOMAC APP/DEP CON** 128.525

**TOWER** 133.1 (1130-0330Z†) **GND CON** 121.8

**CLNC DEL** 120.2 (When twr clsd)

**CLEARANCE DELIVERY PHONE:** For CD when ATCT is clsd ctc Potomac Apch at 866-709-4993.

**AIRSPACE:** CLASS D svc 1130-0330Z†; other times CLASS E.

**RADIO AIDS TO NAVIGATION:** NOTAM FILE IAD.

**ARMEL (L) VOR/DME** 113.5 AML Chan 82 N38°56.08' W77°28.00' 198° 13.0 NM to fld. 296/8W.

VOR unusable:

055°-092° blo 4,500'

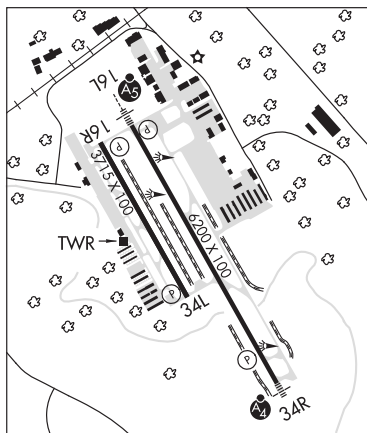
093°-115°

116°-210° blo 4,500'

DME unusable:

055°-210° byd 28 NM blo 2,500'

211°-230° byd 30 NM blo 3,000'

**ILS** 109.1 I-HEF Rwy 16L. Class IE. Localizer offset angle 2.44 deg. Unmonitored when arpt unattended.

**COPTER**  
 H-10H, 12I, L-29E, 34E, 36I, A  
 IAP, AD