

RICHMOND/ASHLAND

HANOVER CO MUNI (OFP)(KOPF) 8 N UTC-5(-4DT) N37°42.54' W77°26.20'

WASHINGTON

207 B TPA—1007(800) NOTAM FILE OFP

H-10H, 12I, L-34E, 36H

RWY 16-34: H5402X100 (ASPH-PFC) S-40 MIRL

IAP

RWY 16: REIL. PAPI(P4L)—GA 3.0° TCH 40'. Tree.

RWY 34: REIL. Trees.

SERVICE: S4 FUEL 100LL, JET A OX 1, 2, 3, 4 LGT ACTIVATE MIRL

Rwy 16-34, REIL Rwys 16 and 34—CTAF.

AIRPORT REMARKS: Attended 1200-0000Z. For acft svcs call 804-798-6500. Deer and birds on and in/ovf arpt. Noise sensitive area south of arpt. Rwy 34 preferred rwy with wind less than 5 kts.

AIRPORT MANAGER: 804-365-6208

WEATHER DATA SOURCES: ASOS 119.025 (804) 752-2902.

COMMUNICATIONS: CTAF/UNICOM 122.7

Ⓡ POTOMAC APP/DEP CON 126.75 118.2

CLNC DEL 125.4

CLEARANCE DELIVERY PHONE: For CD ctc Potomac Apch at 866-640-4124.

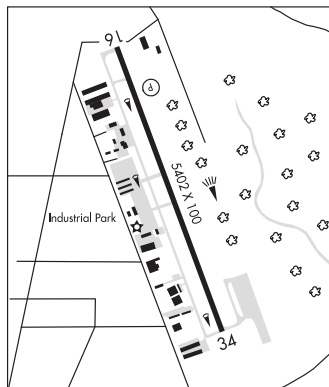
AIRSPACE: CLASS E.

RADIO AIDS TO NAVIGATION: NOTAM file RIC.

RICHMOND (H) VORTAC 114.1 RIC Chan 88 N37°30.14'

W77°19.22' 345° 13.6 NM to fld. 158/9W.

LOC/DME 109.7 I-OPF Chan 34 Rwy 16. LOC unmonitored when arpt unatndd.



RICHMOND N37°30.14' W77°19.22' NOTAM FILE RIC.

WASHINGTON

(H) VORTAC 114.1 RIC Chan 88 at Richmond Intl. 158/9W.

H-10H, 12H, L-34E, 36H

RCO 122.1R 122.2 122.4 114.1T (LEESBURG RADIO)

ROANOKE-BLACKSBURG RGNL/WOODRUM FLD (ROA)(KROA) 3 NW UTC-5(-4DT)

CINCINNATI

N37°19.53' W79°58.53'

H-10H, 12H, L-26I

1175 B TPA—1975(800) Class I, ARFF Index B NOTAM FILE ROA

IAP, AD

RWY 06-24: H6800X150 (ASPH-GRVD) S-150, D-200, 2S-175,

2D-310 PCN 76 F/B/X/T HIRL

RWY 06: MALSR. REIL. VASI(V4L)—GA 3.0° TCH 58'.

RWY 24: REIL. PAPI(P4L)—GA 3.0° TCH 58'. Thid dspcd 790'.

RWY 16-34: H5810X150 (ASPH-GRVD) S-150, D-200, 2S-175, 2D-310 PCN 54 F/A/X/T HIRL 0.4% up NW

RWY 34: MALSR. PAPI(P4L)—GA 3.0° TCH 56'. Tower.

RUNWAY DECLARED DISTANCE INFORMATION

RWY 06: TORA-6800 TODA-6800 ASDA-6800 LDA-6800

RWY 16: TORA-5810 TODA-5810 ASDA-5810 LDA-5810

RWY 24: TORA-6800 TODA-6800 ASDA-6800 LDA-6010

RWY 34: TORA-5810 TODA-5810 ASDA-5810 LDA-5810

ARRESTING GEAR/SYSTEM

RWY 34: EMAS

SERVICE: S4 FUEL 100LL, JET A OX 1, 2 LGT Rwy 34 VGSi and glidepath not coincident. Rwy 24 PAPI unusbl byd 5° rgt of cntrn due to terrain.

AIRPORT REMARKS: Attended continuously. Large flocks of birds in/ovf arpt.

For opr concerns ctc twr at 540-563-1307. Tkof and ldg performance assessment/rwy cond assessment matrix not monitored 2300 to 0600 hrs local time each day. Tkof Rwy 34 and ldg Rwy 16 not authorized at ngt nor dur IFR cond due to terrain. Twy T clsd to acft with wingspan greater than 118'. Cold temperature rstd arpt. Alt correction required at or blo -13C. Tran pilots ctc FBO UNICOM freq 122.95 for acft parking and escort.

AIRPORT MANAGER: 540-362-1999

WEATHER DATA SOURCES: ASOS (540) 265-0680 LLWAS.

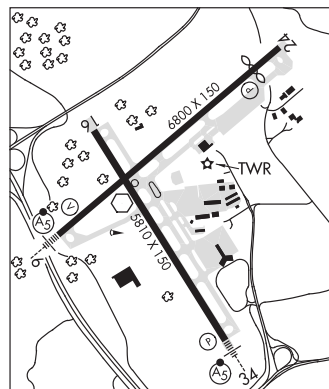
COMMUNICATIONS: ATIS 132.375 UNICOM 122.95

ROANOKE RCO 122.1R 122.2 (LEESBURG RADIO)

Ⓡ APP/DEP CON 118.15 Rwy 16/34 (360°-150°) Rwy 06 (235°-074°) 126.9 Rwy 16/34 (151°-359°) Rwy 06 (075°-234°)

TOWER 118.3 GND CON 121.9 CLNC DEL 119.7

AIRSPACE: CLASS C svc ctc APP CON svc continuous.



CONTINUED ON NEXT PAGE

CONTINUED FROM PRECEDING PAGE

RADIO AIDS TO NAVIGATION: NOTAM FILE ROA.

(L) **VOR/DME** 109.4 ROA Chan 31 N37°20.61' W80°04.22' 107° 4.7 NM to fld. 3072/4W.**WOODRUM (T) VORW** 114.9 ODR N37°19.45' W79°58.74' at fld. 1164/8W.

VOR unusable:

035°-050° byd 20 NM blo 7,000'

035°-110° byd 10 NM blo 4,200'

035°-110° byd 15 NM blo 6,500'

290°-360° byd 15 NM

VINTON NDB (MHW) 277 VIT N37°12.24' W79°52.90' 336° 8.6 NM to fld. 1543/8W.

NDB unusable:

Byd 11 NM

LDA/DME 111.1 I-SZK Chan 48 Rwy 06. Glideslope AIMED parl to LOC course. DME unusable byd 30° left of course. LOC unusable wi 0.6 NM. Autopilot cpd apchs na blw 1,475' MSL.**ILS** 109.7 I-ROA Rwy 34. Class IB. Unmonitored when ATCT clsd.

SALUDA

HUMMEL FLD (W75) 6 E UTC-5(-4DT) N37°36.14' W76°26.80'

30 B NOTAM FILE DCA

RWY 01-19: H2167X45 (ASPH) S-12.5 MIRL 0.3% up S**RWY 01:** APAP(PNIL). Thld dsplcd 125'. Tree.**RWY 19:** APAP(PNIR). Tree.**SERVICE:** S4 FUEL 100LL LGT ACTIVATE MIRL Rwy 01-19-CTAF.Rwy 01 has NSTD thld lgts, has second set of green lgts. Rwy 01 VGSI
OTS indef. Rwy 19 VGSI OTS indef.**AIRPORT REMARKS:** Attended 1300-2100Z†. Unattended Thanksgiving,
Christmas day and New Year's day. Topping is city closest to the arpt.
Arpt is 2 miles ENE. Drainage swales full length of rwy on both sides.
Use of exit in front of Hummel Aviation advised. Birds and deer on and
invo of arpt during winter. Departing Rwy 01-19 climb to 500 ft
before any turn out; arriving acct use wide pattern to avoid populated
areas E and W of arpt.**AIRPORT MANAGER:** 804-758-4330**WEATHER DATA SOURCES:** AWOS-3 118.45 (804) 758-8592.**COMMUNICATIONS:** CTAF/UNICOM 123.0® **NORFOLK APP/DEP CON** 126.05**CLEARANCE DELIVERY PHONE:** For CD ctc Norfolk Apch at 757-464-0757.**RADIO AIDS TO NAVIGATION:** NOTAM FILE DCA.**HARCUM (L) VORTAC** 108.8 HCM Chan 25 N37°26.92'

W76°42.68' 061° 15.6 NM to fld. 8/7W.

VOR unusable:

056°-095° blo 2,000'

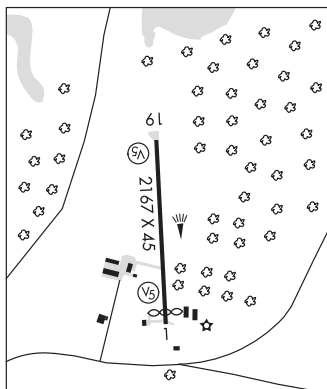
174

275°-300° blo 2,000'

WASHINGTON

L-34E, 36I

IAP

**SHANNON** (See FREDERICKSBURG on page 352)**SHENANDOAH VALLEY RGNL** (See STAUNTON/WAYNESBORO/HARRISONBURG on page 381)**SMITH MOUNTAIN LAKE** (See MONETA on page 364)