

CONNERSVILLE

METTEL FLD (CEV)(KCEV) 3 N UTC-5(-4DT) N39°41.89' W85°07.87'

ST LOUIS

H-5E, 10F, L-27E

IAP

866 B NOTAM FILE HUF

RWY 18-36: H6503X100 (ASPH-GRVD) S-50, D-84, 2S-107 MIRL

RWY 18: MALSR. REIL. PAPI(P4L)—GA 3.0° TCH 47'. Trees.

RWY 36: REIL. PAPI(P4L)—GA 3.0° TCH 34'. Trees.

RWY 04-22: 2601X100 (TURF)

RWY 04: Trees.

RWY 22: Trees.

SERVICE: FUEL 100LL, JET A LGT MIRL Rwy 18-36 preset low ints, increase ints and ACTIVATE MALSR Rwy 18, REIL Rwys 18 and 36—CTAF.

AIRPORT REMARKS: Attended 1300-2200Z†. For arpt svcs after hrs call 765-969-2586. Fuel 24 hour self-svc. Birds and deer on and in/ov arpt. Rwy 04 and Rwy 22 dspld thlds marked by orange cones.

AIRPORT MANAGER: (765) 825-5581

WEATHER DATA SOURCES: AWOS-3 118.325 (765) 827-6649.

COMMUNICATIONS: CTAF/UNICOM 122.8

Ⓡ COLUMBUS APP/DEP CON 118.425

RADIO AIDS TO NAVIGATION: NOTAM FILE HUF.

RICHMOND (L) DME 110.6 RID Chan 43 N39°45.30'

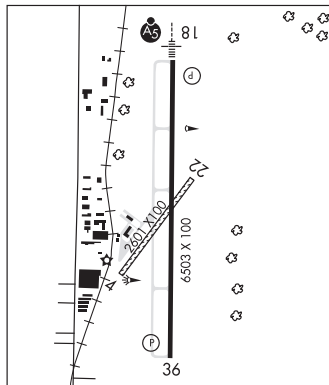
W84°50.33' 256° 14.0 NM to fld. 1135/0W.

PNTHR NDB (LOMW) 227 SQ N39°46.63'

W85°07.79' 185° 4.7 NM to fld. 917/4W.

ILS 108.35 I-SQK Rwy 18. LOM PNTHR NDB. ILS and LOM unmonitored.

COMM/NAV/WEATHER REMARKS: Columbus CLNC DEL (614) 338-8537.



CONVERSE (118) 1 W UTC-5(-4DT) N40°34.25' W85°53.50'

CHICAGO

840 NOTAM FILE HUF

RWY 07-25: H1800X40 (ASPH)

RWY 07: Thld dspld 38'. Crops.

RWY 25: Thld dspld 38'. Crops.

AIRPORT REMARKS: Unattended. Radio controlled airplanes on and in/ov arpt. Rwy extdd 46' equally at both ends.

AIRPORT MANAGER: (765) 395-3459

COMMUNICATIONS: CTAF 122.9

CLEARANCE DELIVERY PHONE: For CD ctc Chicago ARTCC at 630-906-8921.

CRAWFORDSVILLE RGNL (CFJ)(KCFJ) 4 S UTC-5(-4DT) N39°58.48' W86°55.27'

ST LOUIS

L-27D

IAP

800 B NOTAM FILE HUF

RWY 04-22: H5505X75 (ASPH-GRVD) S-16, D-25 MIRL

RWY 04: REIL. PAPI(P4L)—GA 3.0° TCH 41'. Crops.

RWY 22: REIL. PAPI(P4L)—GA 3.0° TCH 42'. Thld dspld 502'. Road.

SERVICE: S4 FUEL 100LL, JET A LGT ACTIVATE REIL Rwys 04 and 22—CTAF. MIRL Rwy 04-22 preset to low ints; increase ints—CTAF. Rwy 04 PAPI unusbl byd 8° left of cntrln.

AIRPORT REMARKS: Attended 1400-2200Z†. Arpt CLOSED to Part 137 ops exc PPR 765-362-0070. Parachute Jumping.

AIRPORT MANAGER: (765) 362-0707

WEATHER DATA SOURCES: AWOS-3PT 125.650 (765) 362-2967.

COMMUNICATIONS: CTAF/UNICOM 122.8

Ⓡ INDIANAPOLIS APP/DEP CON 119.05

CLEARANCE DELIVERY PHONE: For CD ctc Indianapolis Apch at 317-227-5744.

RADIO AIDS TO NAVIGATION: NOTAM FILE HUF.

BRICKYARD (H) VORTACW 116.3 VHP Chan 110 N39°48.88'

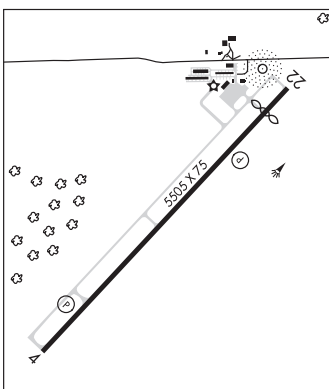
W86°22.05' 290° 27.3 NM to fld. 872/1E.

TACAN unusable:

312°-346° byd 25 NM blo 4,000'

NDB (MHW) 388 CFJ N39°58.86' W86°54.94' at fld.

803/4W. unmonitored.



CROOKED LAKE SPB (See ANGOLA on page 92)

CROWNPOINT N41°24.25' W87°14.27'

CHICAGO

RCO 122.3 (TERRE HAUTE RADIO)

L-281