

PHILADELPHIA INTL (PHL)(KPHL) 5 SW UTC-5(-4DT) N39°52.33' W75°14.44'

WASHINGTON

36 B LRA Class I, ARFF Index E NOTAM FILE PHL

H-101, 121, L-346, A

RWY 09R-27L: H12000X200 (ASPH-GRVD) S-200, D-210, 2D-350

IAP, AD

PCN 60 F/A/X/T HIRL CL

RWY 09R: ALSF2. TDZL. PAPI(P4R)—GA 3.0° TCH 72'. RVR-TMR Tree.

RWY 27L: MALS.R. PAPI(P4L)—GA 3.0° TCH 73'. RVR-TMR Thld dsplcd 1913'. Boat.

RWY 09L-27R: H9500X150 (ASPH-GRVD) S-100, D-210, 2D-350

PCN 60 F/A/X/T HIRL CL

RWY 09L: MALS.R. REIL. RVR-TMR Trees.

RWY 27R: MALS.R. PAPI(P4L)—GA 3.0° TCH 81'. RVR-TMR Boat.

RWY 17-35: H6500X150 (ASPH-GRVD) S-100, D-170, 2S-175, 2D-300 PCN 27 F/A/X/T HIRL

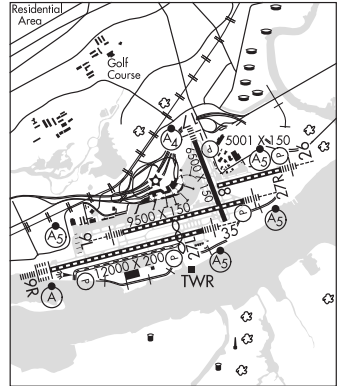
RWY 17: MALS.F. PAPI(P4L)—GA 3.0° TCH 50'. RVR-TR Sign.

RWY 35: REIL. RVR-TR Boat.

RWY 08-26: H5001X150 (ASPH-GRVD) D-145 PCN 27 F/A/X/T HIRL CL 0.5% up E

RWY 08: RVR-TR Bldg.

RWY 26: MALS.R. PAPI(P4R)—GA 3.15° TCH 50'. RVR-TR Trees.



RUNWAY DECLARED DISTANCE INFORMATION

RWY 08: TORA-5001 TODA-5001 ASDA-5001 LDA-5001

RWY 09L: TORA-9500 TODA-9500 ASDA-9500 LDA-9500

RWY 09R: TORA-12000 TODA-12000 ASDA-12000 LDA-12000

RWY 17: TORA-6500 TODA-6500 ASDA-6500 LDA-6500

RWY 26: TORA-5001 TODA-5001 ASDA-5001 LDA-5001

RWY 27L: TORA-12000 TODA-12000 ASDA-11825 LDA-9912

RWY 27R: TORA-9500 TODA-9500 ASDA-9500 LDA-8864

RWY 35: TORA-6500 TODA-6500 ASDA-6500 LDA-6500

SERVICE: S4 FUEL 100LL, JET A OX 1, 2, 3, 4 LGT Rwy 26 PAPI unusable byd 8° right of cntrln.

AIRPORT REMARKS: Attended continuously. Birds on and invof arpt. Arpt is lctd in a noise sensitive area. Arpt NS ABTMT tkf procedures are to be used. Unlgtgd stack 288' MSL (271' AGL) 2.3 NM southwest of arpt. TCAS equipped acft, TCAS alert may be caused by transponder equipped ships lctd PHL Naval Base 3 NM east. Rwy 26, Rwy 27L, Rwy 27R, and Rwy 35 ship channel (Delaware River) max height of ships 189'. Rwy 26 ship channel (Schuylkill) max height of ships 149'. Rwy 27R LDA 9500' avbl O/R to ATC. Possible unmarked ship obst transiting east or westbound along the Delaware River reaching heights of 189', be alert when apch PHL Rwy 35 and whenever circling or visually apch all other rwys. Pilots can exp to exit and re-enter the PHL Class B airspace dur moderate to heavy arrival periods. Rwy 09R rollout RVR used for Rwy 09L midpoint RVR. ASDE-X in use. Operate transponders with altitude reporting mode and ADS-B (if equipped) enabled on all airport surfaces. Only nose-in parking permitted on North remote aprons. PPR from arpt ops for all acft parking on remote aprons, ctc 215-937-6914/6800. Land Rwy 26, tkf Rwy 08. Ldg fee. Flight Notification Service (ADCUS) avbl. NOTE: See Special Notices—Continuous Power Facilities.

AIRPORT MANAGER: 215-937-6914

WEATHER DATA SOURCES: ASOS (215) 492-9617 LLWAS. TDWR.

COMMUNICATIONS: D-ATIS ARR 133.4 D-ATIS DEP 135.925 UNICOM 122.95

Ⓡ APP CON 123.8 (001°-089° at or blo 5000') 126.85 (270°-360° at or blo 5000') 127.35 (090°-269° at or blo 5000') 128.4 (270°-089° abv 5000') 133.875 (090°-269° 8000' -6000')

Ⓡ DEP CON 119.75 (090°-269°) 124.35 (270°-089°)

TOWER 118.5 (Rwys 09L-27R, 17-35, 08-26) 135.1 (Rwy 09R-27L) **GND CON** 121.9 121.65

CLNC DEL 118.85

CPDLC (LOGON KUSA)

AIRSPACE: CLASS B See VFR Terminal Area Chart.

CONTINUED ON NEXT PAGE

CONTINUED FROM PRECEDING PAGE

VOR TEST FACILITY (VOT) 109.8

RADIO AIDS TO NAVIGATION: NOTAM FILE MIV.

DUPONT (L) VORTAC 114.0 DQO Chan 87 N39°40.69' W75°36.43' 065° 20.6 NM to fld. 70/10W.

TACAN AZIMUTH & DME unusable:

040°-100° byd 25 NM blo 5,000'

210°-235° byd 30 NM blo 3,000'

235°-265° byd 22 NM

265°-275° byd 30 NM blo 5,000'

310°-320° byd 35 NM blo 4,000'

VOR unusable:

025°-039° byd 25 NM

025°-039° byd 5 NM blo 10,000'

040°-120° byd 25 NM blo 4,000'

125°-225° blo 10,000'

225°-230° byd 15 NM blo 3,000'

230°-265° byd 22 NM

265°-275° byd 30 NM blo 8,000'

300°-315° byd 35 NM blo 3,000'

355°-005° blo 3,000'

355°-005° byd 15 NM blo 4,000'

355°-005° byd 25 NM

ILS/DME 108.95 I-VII Chan 26(Y) Rwy 09L. Class IB. DME also serves Rwy 27R.

ILS/DME 109.3 I-PHL Chan 30 Rwy 09R. Class IIIE. DME also serves Rwy 27L.

ILS/DME 108.75 I-MYY Chan 24(Y) Rwy 17. Class IT. LOC unusable byd 15° left of course.

ILS/DME 111.55 I-LLH Chan 52(Y) Rwy 26.

ILS/DME 109.3 I-GLC Chan 30 Rwy 27L. Class IE.

ILS/DME 108.95 I-PDP Chan 26(Y) Rwy 27R. Class IIE. DME installed on Rwy 09L serves Rwy 09L/27R.

COMM/NAV/WEATHER REMARKS: Dual VHF comm rq for Simultaneous Close Parallel ILS PRM apchs. Rwy 26 monitor 123.6 and Rwy 27L monitor 120.425.

WINGS FLD (LOM)(KLOM) 3 NW UTC-5(-4DT) N40°08.25' W75°15.91'

302 B NOTAM FILE LOM

RWY 06-24: H3700X75 (ASPH) S-12.5 MIRL 0.6% up SW

RWY 06: REIL. PAPI(P2L)—GA 3.0° TCH 40'. Thld dspcd 177'. Pole.

RWY 24: REIL. PAPI(P2L)—GA 3.0° TCH 40'. Trees.

SERVICE: S4 FUEL 100LL, JET A OX 1, 2 LGT ACTIVATE MIRL Rwy

06-24, PAPI Rwy 06 and Rwy 24 and REIL Rwy 06 and Rwy

24—CTAF.

AIRPORT REMARKS: Attended 1100-0300Z†. For svc after hrs ctc

215-646-0400. Deer and large flocks of geese on and invof arpt. PPR

all acct exceeding 12,500 lbs max tkf gross weight or abv, call

215-646-0400. NS ABTMT Rwy 06 and 24, no turns after tkf before

1000' AGL. Avoid overflight of schools east and west of arpt. Rwy

06-24 no touch and go landings.

AIRPORT MANAGER: 215-646-0400

WEATHER DATA SOURCES: AWOS-3 118.925 (215) 646-1068.

COMMUNICATIONS: CTAF/UNICOM 123.0

® PHILADELPHIA APP/DEP CON 126.85

CLNC DEL 118.55 (800-354-9884)

CLEARANCE DELIVERY PHONE: For CD ctc Philadelphia Apch at

800-354-9884.

RADIO AIDS TO NAVIGATION: NOTAM FILE IPT.

MODENA (L) VORTAC 113.2 MXE Chan 79 N39°55.08' W75°40.25' 064° 22.9 NM to fld. 473/9W. HIWAS.

VOR unusable:

036°-046°

047°-057° byd 10 NM

058°-085°

170°-248° byd 27 NM blo 7,500'

170°-248° byd 30 NM blo 9,500'

170°-248° byd 8 NM blo 6,000'

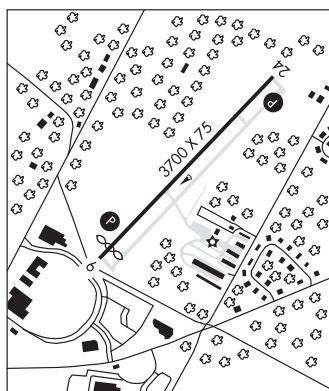
268°-278° byd 28 NM

278°-290° blo 10,000'

290°-326°

AMBLER NDB (MHW) 275 ING N40°07.56' W75°17.11' 065° 1.2 NM to fld. 12W.

OTS indef



NEW YORK

L-34G, A

IAP

PHILADELPHIA SPB (See ESSINGTON on page 277)