

TED STEVENS ANCHORAGE INTL (ANC)(PANC) P (ANG) 4 SW UTC-9(-8DT) N61°10.45' W149°59.89'

ANCHORAGE
H-1B, 2K, L-1A, 3D, 4G
IAP, AD

151 B LRA Class I, ARFF Index E NOTAM FILE ANC

RWY 07R-25L: H12400X200 (ASPH-CONC-GRVD) S-75, D-175, 2S-175, 2D-400, 2D/2D2-1300 PCN 81 F/A/W/T HIRL CL

RWY 07R: ALSF2. TDZL. PAPI(P4R)—GA 3.0° TCH 72'. RVR-TMR Rgt ttc.

RWY 25L: PAPI(P4L)—GA 3.0° TCH 75'. RVR-TMR 0.4% up.

RWY 15-33: H10865X150 (ASPH-GRVD) S-75, D-175, 2S-175, 2D-400, 2D/2D2-900 PCN 81 F/A/W/T HIRL CL

RWY 15: ODALS. PAPI(P4L)—GA 3.2° TCH 75'. RVR-TMR Rgt ttc. 0.5% down.

RWY 33: REIL. PAPI(P4R)—GA 3.0° TCH 60'. RVR-TMR Thld dspcd 465'.

RWY 07L-25R: H10600X150 (ASPH-GRVD) S-75, D-175, 2S-175, 2D-400, 2D/2D2-900 PCN 81 F/A/W/T HIRL CL

RWY 07L: MALSR. TDZL. PAPI(P4R)—GA 3.0° TCH 63'. RVR-T Rgt ttc. 0.5% down.

RWY 25R: PAPI(P4L)—GA 3.0° TCH 60'. RVR-R

RUNWAY DECLARED DISTANCE INFORMATION

RWY 07L:TORA-10600 TODA-10600 ASDA-10600 LDA-10600

RWY 07R:TORA-10900 TODA-10900 ASDA-10900 LDA-12400

RWY 15:TORA-10865 TODA-10865 ASDA-10000 LDA-10000

RWY 25L:TORA-12400 TODA-12400 ASDA-12000 LDA-12000

RWY 25R:TORA-10600 TODA-10600 ASDA-10600 LDA-10600

RWY 33:TORA-10865 TODA-11965 ASDA-10865 LDA-10400

SERVICE: S4 FUEL 100, 100LL, JET A, A1 OX 1, 2, 3, 4

AIRPORT REMARKS: Special Air Traffic Rules-Part 93, see Regulatory Notices. Attended continuously. Noise sensitive area in effect contact arpt manager at 907-266-2525 or arpt ops at 907-266-2600 for further information. Migratory birds invof arpt Spring through Fall. ASSC in use. Operate transponders with altitude reporting mode and ADS-B (if equipped) enabled on all airport surfaces. One hr PPR for non-transponder acft ops. PPR for non-radio acft ops. Pilots must provide an ETA and remain within plus or minus 15 minutes of ETA. To coord non-transponder or non-radio ops ctc Anchorage twr at 907-271-2700 during administration hrs (1630-0100Z± weekdays). During non-administration hrs and holidays ctc FAA at 907-271-5936. No nighttime non-radio acft ops permitted. Transient military acft PPR. NOTE: Twy K is north of and parallel to Rwy 07R/L-25R/L. Use caution to avoid ldg on twy. When Rwy 07R-25L or Rwy 15-33 are CLOSED, Rwy 07L-25R open to all acft. FAA ramp PPR ctc ANC FIFO freq 135.85 907-271-2414 or AVN 405-954-9780 Mon-Fri 1500-2330Z±. All turbojet/turbofan acft departing Rwy 07R/07L dur a Rwy 15-33 closure will employ the FAA close-in NADP or ICAO procedure B NADP when safety permits. Right turn out of ramp parking area R-2 thru R-4 prohibited. General aviation ops be alert, jet blast all twys and parking ramp. Rwy 07R, back taxiing from Twy J for departure prohibited. No compass calibration pad. Unlighted 489' twr 2 1/2 miles NE. Portions of Twy K between Twy H and Twy J not vis from twr. Twy V security gate east of Twy E, key 121.75 5 times to ACTIVATE. Twy V rstd to acft weighing 12,500 lbs or less. Subject to jet blast west of Twy E. Rwy end 25L has 200' blast pad. NOTE: See Special Notices-Continuous Power Facilities. See GENERAL NOTICES-ENTRY REQUIREMENTS (CIVIL).

AIRPORT MANAGER: 907-266-2525

WEATHER DATA SOURCES: ASOS (907) 271-5278 (WX CAM) (TWEB TED 113.15) (TWEB CMQ 338).

COMMUNICATIONS: UNICOM 122.95 D-ATIS 135.5 907-243-2847

RCO 255.4 122.2 (KENAI FSS)

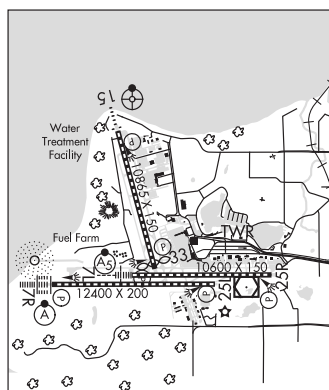
RCO 122.55 122.3 (KENAI FSS)

Ⓡ APP/DEP CON 363.2 119.1 (250°-330° 1500' and blo) (331°-045° 2500' and blo)
290.5 118.6 (250°-330° abv 1500') (331°-045° abv 2500')
270.25 126.4 (046°-205°) 270.25 123.8 (206°-249°)

TOWER 257.8 118.3 GND CON 338.25 121.9 CLNC DEL 323.1 119.4

INTERNATIONAL A/G FREQS 13273 11330 10048 8951 6655 5628 2932 (San Francisco ARINC)

AIRSPACE: CLASS C svc ctc APP CON.



CONTINUED ON NEXT PAGE

CONTINUED FROM PRECEDING PAGE

VOR TEST FACILITY (VOT) 108.4

RADIO AIDS TO NAVIGATION: NOTAM FILE ANC.

ANCHORAGE (H) ABVORWDM E 113.15 TED Chan 78(Y) N61°10.07' W149°57.61' 271° 1.2 NM to fld. 93/18E. TWEB.

VOR portion unusable:

040°-090° byd 25 NM blo 15,000'
090°-095° byd 20 NM blo 15,000'
095°-120° byd 25 NM blo 12,500'
120°-145° byd 25 NM blo 9,000'

DME portion unusable:

040°-090° byd 25 NM blo 15,000'
090°-095° byd 20 NM blo 15,000'
095°-120° byd 25 NM blo 12,500'
120°-145° byd 25 NM blo 9,000'
195°-205° byd 25 NM blo 3,500'
205°-210° byd 25 NM blo 4,000'
210°-220° byd 25 NM blo 3,500'

CAMPBELL LAKE NDB (HW SAB) 338 CMQ N61°10.26' W150°02.86' 067° 1.5 NM to fld. 65/16E. TWEB.

ILS/DME 109.9 I-TGN Chan 36 Rwy 07L. Class IE.

ILS/DME 111.3 I-ANC Chan 50 Rwy 07R. Class III E. LOC unusable byd 25° left of course. DME unusable byd 25° right of course.

ILS/DME 111.75 I-BSC Chan 54(Y) Rwy 15. Class IE.

COMM/NAV/WEATHER REMARKS: For a toll free call to Kenai FSS dial 1-866-864-1737. SELCAL facility on HF avbl, opr by San Francisco ARINC. For WSO dial 907-266-5105. SSB (upper channel) capability. Avbl for all HF air/gnd freqs. Use freq 122.55 for filing, activating and canceling flt plans in the Anchorage Bowl Area. VOT unusable east of Twy K, south of Twy M and Twy R. Oceanic/polar flights and flights with Aleutian chain destinations requesting above FL270 contact Anchorage ARTCC on freq 127.55 for clearance prior to starting engines.

ANCHORAGE N61°10.07' W149°57.61' NOTAM FILE ANC.

ANCHORAGE

(H) ABVORWDM E 113.15 TED Chan 78(Y) 334° 1.1 NM to Lake Hood. 93/18E.

H-1B, 2K, L-1A, 3D, 4G

VOR portion unusable:

040°-090° byd 25 NM blo 15,000'
090°-095° byd 20 NM blo 15,000'
095°-120° byd 25 NM blo 12,500'
120°-145° byd 25 NM blo 9,000'

DME portion unusable:

040°-090° byd 25 NM blo 15,000'
090°-095° byd 20 NM blo 15,000'
095°-120° byd 25 NM blo 12,500'
120°-145° byd 25 NM blo 9,000'
195°-205° byd 25 NM blo 3,500'
205°-210° byd 25 NM blo 4,000'
210°-220° byd 25 NM blo 3,500'

RCO 122.2 (KENAI RADIO)

RCO 122.3 122.55 (KENAI RADIO)

ANDERSON LAKE (See WASILLA on page 259)