

**SALINA—GUNNISON** (44U) 5 NE UTC-7(-6DT) N39°01.75' W111°50.30'

LAS VEGAS

5159 B NOTAM FILE CDC

L-9C

**RWY 02-20:** H3855X60 (ASPH) S-6 MIRL 0.7% up N

**SERVICE:** LGT ACTIVATE MIRL Rwy 02-20—CTAF.

**AIRPORT REMARKS:** Unattended.

**AIRPORT MANAGER:** (435) 979-9234

**COMMUNICATIONS:** CTAF 122.9

**CLEARANCE DELIVERY PHONE:** For CD ctc Salt Lake ARTCC at 801-320-2568.

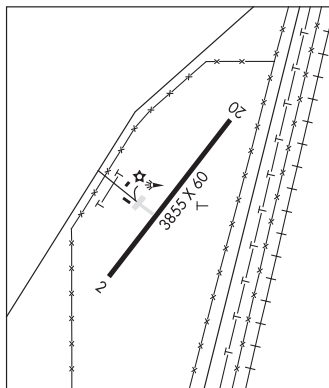
**RADIO AIDS TO NAVIGATION:** NOTAM FILE CDC.

**DELTA (H) VORTACW** 116.1 DTA Chan 108 N39°18.13'

W112°30.33' 102° 35.2 NM to fld. 4642/16E.

VOR portion unusable

045°-090° byd 25 NM blo 10,700'



## SALT LAKE CITY

**SALT LAKE CITY INTL** (SLC)(KSLC) P (ANG) 3 W UTC-7(-6DT)

N40°47.30' W111°58.67'

**SALT LAKE CITY**

4231 B LRA Class I, ARFF Index E NOTAM FILE SLC

H-3D, L-9C, 11D

**RWY 16L-34R:** H12002X150 (ASPH-GRVD) S-60, D-200, 2S-175, 2D-350, 2D/2D2-850 HIRL CL

IAP, AD

**RWY 16L:** ALSF2. TDZL. PAPI(P4L)—GA 3.0° TCH 70'. RVR-TMR

**RWY 34R:** ALSF2. TDZL. PAPI(P4L)—GA 3.0° TCH 73'. RVR-TMR

**RWY 16R-34L:** H12000X150 (CONC-GRVD) S-60, D-200, 2S-175, 2D-350, 2D/2D2-850 HIRL CL

**RWY 16R:** ALSF2. TDZL. PAPI(P4L)—GA 3.0° TCH 73'. RVR-TMR

**RWY 34L:** ALSF2. TDZL. PAPI(P4L)—GA 3.0° TCH 73'. RVR-TMR

**RWY 17-35:** H9596X150 (ASPH-GRVD) S-60, D-200, 2S-175, 2D-350, 2D/2D2-850 HIRL CL

**RWY 17:** MALSR. TDZL. PAPI(P4R)—GA 3.0° TCH 76'. RVR-TR

**RWY 35:** MALSR. TDZL. PAPI(P4L)—GA 3.0° TCH 74'. RVR-TR Thld

dsplcd 324'. Antenna.

**RWY 14-32:** H4893X150 (ASPH-GRVD) S-60, D-200, 2D-350, 2D/2D2-850 HIRL

**RWY 14:** PAPI(P4L)—GA 3.0° TCH 40'.

**RWY 32:** PAPI(P4L)—GA 3.0° TCH 41'.

**RUNWAY DECLARED DISTANCE INFORMATION**

**RWY 14:** TORA-4892 TODA-4892 ASDA-4892 LDA-4892

**RWY 16L:** TORA-12002 TODA-12002 ASDA-12002 LDA-12002

**RWY 16R:** TORA-12000 TODA-12000 ASDA-12000 LDA-12000

**RWY 17:** TORA-9597 TODA-9597 ASDA-9597 LDA-9597

**RWY 32:** TORA-4892 TODA-4892 ASDA-4892 LDA-4892

**RWY 34L:** TORA-12000 TODA-12000 ASDA-12000 LDA-12000

**RWY 34R:** TORA-12002 TODA-12002 ASDA-12002 LDA-12002

**RWY 35:** TORA-9597 TODA-9597 ASDA-9597 LDA-9273

**SERVICE:** S4 FUEL 100LL, JET A1+ OX 1, 2, 3, 4 MILITARY— JASU (MD-3M) (MA-1A) (M32A-60A) FUEL A++ avbl at

ANG. (NC-100LL, A1+) FLUID LPOX OIL O-148(Mil)

**AIRPORT REMARKS:** Attended continuously. Flocks of birds on and in/ov arpt. Rwy 14-32 CLOSED blw 1200' RVR. Due to t/c

volume, lcl dep and arr ops are discouraged and delays can be expd btn 1500-1730Z† and 0130-0300Z†. Rwy 16L

de-ice pad 131.975. Rwy 34L de-ice pad 128.975. Rwy 34R de-ice pad 129.975. Twy L de-ice pad 131.975. See

current NOTAMs for dates and additional info. Rwy 16L runway area CLOSED permanently. Twy Y rstd to wingspans less

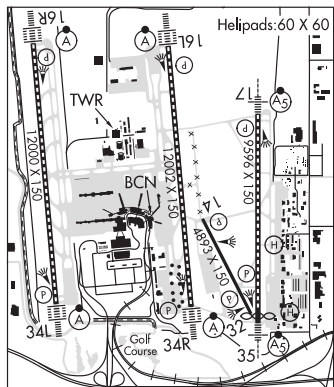
than 171' between Twy H3 and Twy H4. Access to D concourse even numbered gates and E concourse, through spvs

20 and 21 only. Special VFR is not recommended at the arpt, if req, exp delays. Use caution for extv paragliding ops in/ov

point of the mountain. ASDE-X in use. Operate transponders with altitude reporting mode and ADS-B (if equipped)

enabled on all airport surfaces. Use minimum thrust in construction areas. Ctc ground on 123.775 before taxiing out of

north cargo. Flight Notification Service (ADCUS) avbl. NOTE: See Special Notices—Continuous Power Facilities.



CONTINUED ON NEXT PAGE

CONTINUED FROM PRECEDING PAGE

AIRPORT MANAGER: (801) 575-2408

WEATHER DATA SOURCES: ASOS (801) 328-3567 TDWR.

COMMUNICATIONS: D-ATIS 125.625 124.75 801-325-9749 UNICOM 122.95

RCO 122.4 (CEDAR CITY RADIO)

Ⓡ SALT LAKE CITY APP CON 120.9 (South of 41° latitude blo 8000') 121.1 (North of 41° latitude blo 8000') 124.3 (110°-160° TCH abv 8,000') 124.9 (300°-340° abv 8000') 128.1 (160°-250° abv 8000') 135.5 (340°-110° abv 8000') 125.7

Ⓡ SALT LAKE CITY DEP CON 120.9 (South of 41° latitude blo 8000') 121.1 (North of 41° latitude blo 8000') 124.3 (110°-160° TCH abv 8,000') 126.25 (250°-300° abv 8000') 128.1 (160°-250° abv 8000') 135.5 (340°-110° abv 8000') 125.7

TOWER 118.3 (Rwy 17-35 and Rwy 14-32) 119.05 (Rwy 16L-34R) 132.65 (Rwy 16R-34L)

GND CON 121.9 (Rwy 17-35 and Rwy 14-32) 123.775 (Rwy 16R-34L and Rwy 16L-34R) CLNC DEL 127.3

PRE-TAXI CLNC 127.3 PRE-DEP CLNC 127.3

CPDLC (LOGON KUSA)

AIRSPACE: CLASS B See VFR Terminal Area Chart.

VOR TEST FACILITY (VOT) 111.0

RADIO AIDS TO NAVIGATION: NOTAM FILE SLC.

WASATCH (H) VORTACW 116.8 TCH Chan 115 N40°51.02' W111°58.91' 161° 3.7 NM to fld. 4216/16E.

VOR portion unusable:

- 015°-030° blo 26,000'
- 030°-050° byd 20 NM
- 050°-085° byd 20 NM blo 18,000'
- 085°-125° byd 30 NM blo 15,000'
- 360°-015° byd 20 NM blo 17,000'

DME unusable:

- 030°-080° byd 17 NM blo 17,000'
- 030°-080° byd 25 NM
- 080°-140° byd 17 NM blo 15,000'
- 080°-140° byd 25 NM

TACAN AZIMUTH unusable:

030°-140°

TACAN AZIMUTH & DME unusable:

- 185°-220° byd 25 NM blo 16,000'
- 260°-290° byd 25 NM blo 11,000'
- 350°-360° byd 30 NM blo 16,000'
- 360°-030° byd 17 NM blo 16,000'
- 360°-030° byd 30 NM

ILS/DME 109.5 I-MOY Chan 32 Rwy 16L. DME also serves ILS Rwy 34R.

ILS/DME 111.9 I-UAT Chan 56 Rwy 16R. Class IIIE. DME also serves ILS Rwy 34L.

ILS/DME 111.5 I-BNT Chan 52 Rwy 17. Class - IE. DME also serves ILS Rwy 35.

ILS/DME 111.9 I-UUH Chan 56 Rwy 34L. Class IIIE. DME also serves ILS Rwy 16R.

ILS/DME 109.5 I-SLC Chan 32 Rwy 34R. Class IIIE. DME also serves ILS Rwy 16L.

ILS/DME 111.5 I-UTJ Chan 52 Rwy 35. DME also serves ILS Rwy 17

• • • • •  
HELIPAD HB: H60X60 (ASPH)

HELIPAD HF: H60X60 (ASPH)

HELIPORT REMARKS: Helipads B and F lctd on general aviation aprons. Lgtd pole 51' AGL 383' ESE of Helipad B.