

BOSTON

GENERAL EDWARD LAWRENCE LOGAN INTL (BOS)(KBOS) 1 E UTC-5(-4DT)

**NEW YORK
COPTER
H-101, 11D, 12K, L-33D, 34J
IAP, AD**

N42°21.78' W71°00.38'

19 B LRA Class I, ARFF Index E NOTAM FILE BOS

RWY 15R-33L: H10083X150 (ASPH-GRVD) S-120, D-250, 2S-175, 2D-550 PCN 90 F/C/W/T HIRL CL

RWY 15R: MALS.R. TDZL. PAPI(P4L)—GA 3.0° TCH 71'. RVR-TMR Thld dspclcd 882'. Trees.

RWY 33L: ALSF2. TDZL. PAPI(P4R)—GA 3.0° TCH 68'. RVR-TMR Boat.

RWY 04R-22L: H10006X150 (ASPH-GRVD) S-120, D-250, 2S-175, 2D-550 PCN 90 F/C/W/T HIRL CL

RWY 04R: ALSF2. TDZL. PAPI(P4L)—GA 3.0° TCH 67'. RVR-TMR Thld dspclcd 1155'. Boat.

RWY 22L: MALS.F. PAPI(P4R)—GA 3.0° TCH 71'. RVR-TMR Thld dspclcd 1199'. Boat.

RWY 04L-22R: H7864X150 (ASPH-GRVD) S-120, D-250, 2S-175, 2D-550 PCN 90 F/C/W/T HIRL CL

RWY 04L: REIL. PAPI(P4L)—GA 3.0° TCH 50'. RVR-TR Boat.

RWY 22R: PAPI(P4L)—GA 3.0° TCH 50'. RVR-TR Thld dspclcd 819'. Boat.

RWY 09-27: H7001X150 (ASPH-GRVD) S-120, D-250, 2S-175, 2D-550 PCN 90 F/C/W/T HIRL CL

RWY 09: RVR-TR Boat.

RWY 27: REIL. PAPI(P4L)—GA 3.0° TCH 71'. RVR-TR Boat.

RWY 14-32: H5000X100 (ASPH-GRVD) S-120, D-250, 2S-175, 2D-490 PCN 85 F/C/W/T HIRL

RWY 14: Bldg.

RWY 32: REIL. PAPI(P4L)—GA 3.0° TCH 45'.

RWY 15L-33R: H2557X100 (ASPH) S-120, D-250, 2S-175, 2D-550 PCN 90 F/C/W/T MIRL

LAND AND HOLD—SHORT OPERATIONS

LDG RWY	HOLD—SHORT POINT	AVBL LDG DIST
RWY 04L	15L-33R	5250
RWY 15R	09-27	6800
RWY 22L	09-27	6400
RWY 27	04R-22L	5650

RUNWAY DECLARED DISTANCE INFORMATION

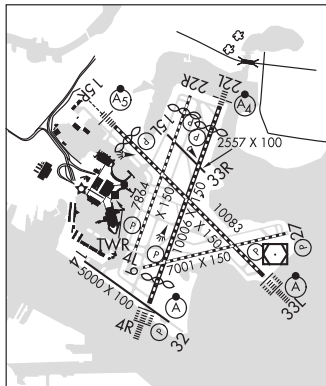
RWY 04L: TORA-7861 TODA-7861 ASDA-7861 LDA-7861
RWY 04R: TORA-10005 TODA-10005 ASDA-10005 LDA-8851
RWY 09: TORA-7000 TODA-7000 ASDA-7000 LDA-7000
RWY 14: TORA-5000 TODA-5000 ASDA-5000 LDA-5000
RWY 15L: TORA-2557 TODA-2557 ASDA-2557 LDA-2557
RWY 15R: TORA-10083 TODA-10083 ASDA-10083 LDA-9202
RWY 22L: TORA-10005 TODA-10005 ASDA-10005 LDA-8806
RWY 22R: TORA-7861 TODA-7861 ASDA-7861 LDA-7046
RWY 27: TORA-7000 TODA-7000 ASDA-7000 LDA-7000
RWY 32: TORA-5000 TODA-5000 ASDA-5000 LDA-5000
RWY 33L: TORA-10083 TODA-10083 ASDA-10083 LDA-10083
RWY 33R: TORA-2557 TODA-2557 ASDA-2557 LDA-2557

ARRESTING GEAR/SYSTEM

RWY 04L: EMAS

RWY 15R: EMAS

SERVICE: S4 FUEL 100LL, JET A OX 1, 2, 3, 4 LGT Rwy status lights in operation. Rwy 22L VGSI unusable byd 7 degs left of centerline.



CONTINUED ON NEXT PAGE

CONTINUED FROM PRECEDING PAGE

AIRPORT REMARKS: Attended continuously. Birds on and in/ovf arpt. Numerous cranes on and in/ovf arpt. Between 0500–1100Z‡ Rwy 15R is preferential night rwy for t/kf and Rwy 33L is preferential ngt rwy for l/dg. Rwy 14–32 unidirectional, no l/dgs Rwy 14, no t/kfs Rwy 32. International ramp arrivals must obtain a gate assignment from international ramp control before entering ramp area. No remaining overnight parking for non-tenant charter acft without prior Massport permission. ASDE-X in use. Operate transponders with altitude reporting mode and ADS-B (if equipped) enabled on all airport surfaces. Terminal E, North and South Cargo arrivals ctc Massport Gate Control on 131.1 before entering/departing ramp area. Pilots should complete all calculations prior to pushback from gate. For NS ABTMT procedures call 617-561-1636 Mon-Fri 1400-2200Z‡. Ldg fee. Flight Notification Service (ADCUS) available. NOTE: See Special Notices—Intersection Departures During Period of Darkness and Continuous Power Facilities. NOTE: See Special Notices—Land and Hold-Short Lights.

AIRPORT MANAGER: 617-567-5400

WEATHER DATA SOURCES: ASOS (617) 567-5762 TDWR.

COMMUNICATIONS: D-ATIS APP 135.0 D-ATIS DEP 135.0 (617) 455-3003 UNICOM 122.95

BOSTON ROO 122.4 122.1R 112.7T (BRIDGEPORT RADIO)

Ⓡ **BOSTON APP/DEP CON** 127.2 (South) 120.6 (West) 118.25 (North)

Ⓡ **BOSTON DEP CON** 133.0

BOSTON TOWER 128.8 (Arrivals/Departures Rwys 04L-22R, 15R-33L, 15L-33R, 14-32, 04R-22L, 09-27) 124.725 (Helicopters)

GND CON 121.9 121.75 **CLNC DEL** 121.65

PRE TAXI CLNC 121.65 **RAMP CTL** 134.05

CPDLC (LOGON KUSA)

AIRSPACE: CLASS B See VFR Terminal Area Chart.

VOR TEST FACILITY (VOT) 111.0

RADIO AIDS TO NAVIGATION: NOTAM FILE BOS.

BOSTON (H) VOR/DME 112.7 BOS Chan 74 N42°21.45' W70°59.37' at fld. 18/16W.

VOR unusable:

061°-104° byd 18 NM blo 2,000'

061°-104° byd 18 NM blo 2,000'

271°-060° byd 25 NM blo 2,000'

271°-060° byd 25 NM blo 3,500'

ILS/DME 110.3 I-BOS Chan 40 Rwy 04R. Class IIIE.

ILS/DME 110.7 I-MDC Chan 44 Rwy 15R. Class IT. Localizer offset angle 001° 35 min.

ILS/DME 110.3 I-LQN Chan 40 Rwy 22L. Class IT. Note *DME also serves Rwy 04R.

ILS/DME 111.3 I-DGU Chan 50 Rwy 27. Class IE.

ILS/DME 110.7 I-LIP Chan 44 Rwy 33L. Class IIIE. LOC unbl byd 33° left side of course.

COMM/NAV/WEATHER REMARKS: DME Channel 40 located 2171' from stop end Rwy 04R and 260' left of centerline is common to Rwy 22L.

CAPE COD (See MARSTON MILLS on page 129)
