

**ST LOUIS LAMBERT INTL** (STL)(KSTL) 10 NW UTC-6(-5DT) N38°44.92' W90°22.20'

**ST LOUIS**

618 B LRA Class I, ARFF Index D NOTAM FILE STL

**H-5D, L-27B, A**

**RWY 12R-30L:** H11019X200 (CONC-GRVD) S-75, D-200, 2S-175,

2D-350, 2D/2D2-760 PCN 85 R/B/W/T HIRL CL

**RWY 12R:** MALSR. TDZL. PAPI(P4L)—GA 3.0° TCH 54'. RVR-TR Thld dspclcd 467'. Road. Rgt tfc.

**RWY 30L:** MALSR. PAPI(P4R)—GA 3.0° TCH 58'. RVR-TR Thld dspclcd 201'. Sign. 0.7% down.

**RWY 12L-30R:** H9003X150 (CONC-GRVD) S-75, D-200, 2S-175,

2D-350, 2D/2D2-760 PCN 85 R/B/W/T HIRL CL

**RWY 12L:** ALSF2. TDZL. REIL. PAPI(P4R)—GA 3.0° TCH 56'.

RVR-TMR Bldg. 0.7% up.

**RWY 30R:** ALSF2. TDZL. PAPI(P4R)—GA 3.0° TCH 55'. RVR-TMR Tower. Rgt tfc. 1.0% down.

**RWY 11-29:** H9001X150 (CONC-GRVD) S-75, D-200, 2D-325,

2D/2D2-700 PCN 85 R/B/W/T HIRL CL

**RWY 11:** ALSF2. TDZL. PAPI(P4R)—GA 3.0° TCH 67'. RVR-TMR Rgt tfc. 0.7% down.

**RWY 29:** ALSF2. TDZL. PAPI(P4L)—GA 3.0° TCH 73'. RVR-TMR 0.7% up.

**RWY 06-24:** H7607X150 (CONC-GRVD) S-75, D-176, 2S-175,

2D-280, 2D/2D2-660 PCN 85 R/B/W/T HIRL

**RWY 06:** MALSR. PAPI(P4R)—GA 3.0° TCH 51'. RVR-TR Tree.

**RWY 24:** MALSR. PAPI(P4L)—GA 3.0° TCH 53'. RVR-TR Sign.

**RUNWAY DECLARED DISTANCE INFORMATION**

**RWY 06:** TORA-7602 TODA-7602 ASDA-7352 LDA-7352

**RWY 11:** TORA-9001 TODA-9001 ASDA-9001 LDA-9001

**RWY 12L:** TORA-9003 TODA-9003 ASDA-9003 LDA-9003

**RWY 12R:** TORA-11019 TODA-11019 ASDA-11019 LDA-10552

**RWY 24:** TORA-7602 TODA-7602 ASDA-7602 LDA-7602

**RWY 29:** TORA-9001 TODA-9001 ASDA-9001 LDA-9001

**RWY 30L:** TORA-11019 TODA-11019 ASDA-11019 LDA-10819

**RWY 30R:** TORA-9003 TODA-9003 ASDA-9003 LDA-9003

**ARRESTING GEAR/SYSTEM**

**RWY 12R** BAK-14 BAK-12B(B) (1090')

BAK-14 BAK-12B(B) (1300') **RWY 30L**

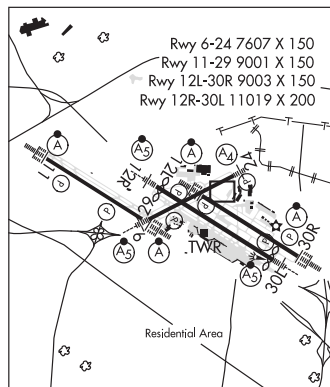
**RWY 06** BAK-14 BAK-12B(B) (1450')

**SERVICE:** S4 FUEL 100LL, JET A OX 1, 2, 3, 4 **MILITARY—A-GEAR** Retractable BAK-12B(B) avbl Rwy 06, 12R, and 30L.

A-G are kept in recessed posit req for use. Twr must be notified at least 5 sec prior to engagement so that cable may be raised. **JASU 1**(AM32A-60A) **5**(MA-1A) **FUEL 100LL A FLUID SP LHOX OIL O-128-133**(148 Mil) **SOAP**

**AIRPORT REMARKS:** Attended continuously. Twy D or Taxilane C from Twy S to Twy G, B-747 or larger acft are not authorized to pass or be passed by B-767 or larger acft operating on the parallel Twy/Taxilane. Twy P, east of the Papa pad to Twy F, restricted to acft with a wingspan of less than 79' (CRJ-900), when acft are parked on the Papa pad. This area is restricted to all ops when acft are performing engine run-ups in the Papa pad. Twy V, underlying the Rwy 12L final approach course is restricted to acft smaller than a CRJ-700 (25' or less), when acft are landing on Rwy 12L. Twy E, btn Twy P and Twy N, restricted to B-767 or smaller acft (wingspan less than 171') when acft are parked on the Echo pad. Taxilane/Twy C, east of Twy D1 to the approach end of Rwy 30L, restricted to B-737 or smaller acft (wingspan less than 118') when acft are parked on the Hotel pad. Taxilane C from Twy S to Twy R, restricted to B-767 or smaller acft (156' avbl) when acft are parked on the Charlie pad. Restriction is for taxiing acft, larger acft may be towed through the area. Taxilane C from Twy P to Twy Q, restricted to a B-757 300 series or smaller. Twy C from Twy P to Twy L rstd to B-757 300 series or smaller when passing behind acft that have made the initial 10' pushback. Twy A east of Twy T, Twy S and Rwy 06-24 south of Twy B, no acft or vehicle ops when arriving or departing Rwy 11 or arriving Rwy 29. Twy L, north Rwy 12L-30R, acft larger than a Gulfstream 5 tax northbound are proh fm making a right turn eastbound on Twy F. Twy V2 is unavbl to B-767 or larger acft (wingspan 118' or greater). Twy V2, B-737 (wingspan greater than 79' but less than 118') must perform judgmental oversteering instead of cockpit over cntrln steering when tax. Twy K1 is unavbl to B-767 or larger acft (wingspan 118' or greater). Wingtip clnc with ground vehicles not adequate along north side of main terminal apron. ASDE-X in use. Opr transponders with altitude reporting mode and ADS-B (if equipped) enabled on all airport surfaces. Waiver to conduct simultaneous apchs to parallel runways separated by 1,300 ft in effect. Ldg fee: Ldg fee based on acft weight collected by FBO. Flight Notification Service (ADCUS) avbl. **NOTE:** See Special Notices—Continuous Power Facilities.

**MILITARY REMARKS:** **RSTD** No practice apch unless authorized by twr/arpt authority. No student solo ops permitted. **MISC** Mil acft planning to arr when wx is anticipated to be less than 1200'/5 must file flt plan before 0900Z†.



**CONTINUED ON NEXT PAGE**

## CONTINUED FROM PRECEDING PAGE

AIRPORT MANAGER: 314-426-8000

WEATHER DATA SOURCES: ASOS (314) 890-4790 HIWAS 117.4 STL. LAWRIS. LLWAS. TDWR.

COMMUNICATIONS: D-ATIS 125.025 379.925 (314)890-4777 UNICOM 122.95

ST LOUIS RCO 122.6 (ST LOUIS RADIO)

Ⓡ ST LOUIS APP CON 132.125 360.6

ST LOUIS TOWER 118.5 257.7(Rwy 12R-30L) 120.05 284.6(Rwy 12L-30R, 24) 132.475 239.275(Rwy 06, 11-29)

ST LOUIS GND CON 121.9 348.6(Inbound) 121.65 377.175(Outbound) 118.925 227.125(Rwy 11-29)

GND METERING 127.55 360.2(East) 121.075 346.35(West)

CLNC DEL 119.5 363.1

Ⓡ ST LOUIS DEP CON 128.1 307.05(S/W) 119.15 335.5(N/E)

CPDLC (LOGON KUSA)

AIRSPACE: CLASS B See VFR Terminal Area Chart.

VOR TEST FACILITY (VOT) 111.0

RADIO AIDS TO NAVIGATION: NOTAM FILE STL.

CARDINAL (H) DME 116.45 CSX Chan 111(Y) N38°45.16' W90°21.66' at fld. 530/OE.

DME unusable:

027°-033° byd 30 NM blo 4,500'

041°-138° byd 25 NM blo 4,500'

164°-234° byd 15 NM blo 3,000'

164°-234° byd 24 NM blo 4,500'

300°-016° byd 33 NM blo 4,500'

(H) VORTACW 117.4 STL Chan 121 N38°51.64' W90°28.94' 141° 8.5 NM to fld. 450/1E. HIWAS.

OBLIO NDB (LOMW) 338 LM N38°48.02' W90°28.48' 123° 5.8 NM to fld. 446/1W.

ZUMAY NDB (LOMW) 404 ST N38°47.28' W90°16.73' 242° 4.9 NM to fld. 580/1W.

ILS/DME 110.3 I-JAK Chan 40 Rwy 06. Class IB. Glideslope unusable byd 3° left of course byd 7° right of course.

DME also serves Rwy 24. LOC unusable inside of .3 NM fm thld. DME unusable byd 8.5 NM blo 3,000'. Glideslope unusable byd 8.1 NM (byd 8.5 DME).

ILS/DME 111.95 I-OGZ Chan 56(Y) Rwy 11. Class IIIE.

ILS/DME 108.9 I-LDZ Chan 26 Rwy 12L. Class IIIE.

ILS/DME 109.7 I-LMR Chan 34 Rwy 12R. Class IB. LOM OBLIO NDB.

ILS/DME 110.3 I-STL Chan 40 Rwy 24. Class IC. LOM ZUMAY NDB. LOC unusable byd 25° both sides. DME unusable byd 8.5 NM blo 3,000'.

ILS/DME 111.95 I-RQN Chan 56(Y) Rwy 29. Class IE.

ILS 111.5 I-BKY Rwy 30L. Class IT. Outer marker used for both Rwy 30L/r ILS.

ILS/DME 111.3 I-SJW Chan 50 Rwy 30R. Class IIIE.

COMM/NAV/WEATHER REMARKS: A pre-taxi clnc program is in effect. IFR dep are req to contact St Louis Clnc Del no more than 10 minutes prior to taxi time.

**ST LOUIS DOWNTOWN** (See CAHOKIA/ST LOUIS on page 220)

**ST LOUIS RGNL** (See ALTON/ST LOUIS on page 213)

**SALEM MEM** (K33) 4 SW UTC-6(-5DT) N37°36.91' W91°36.27'

1241 B TPA—2041(800) NOTAM FILE STL

RWY 17-35: H2998X60 (ASPH) S-12.5 MIRL 0.7% up S

RWY 17: REIL. PAPI(P2L)—GA 3.0° TCH 41'.

RWY 35: REIL. PAPI(P2L)—GA 3.0° TCH 45'.

SERVICE: FUEL 100LL LGTACTIVATE MIRL Rwy 17-35—CTAF; to increase ints and ACTIVATE REIL Rwy 17 and Rwy 35—CTAF.

AIRPORT REMARKS: Unattended. Self service fuel avbl 24 hrs.

AIRPORT MANAGER: 573-729-5900

COMMUNICATIONS: CTAF 122.9

KANSAS CITY CENTER APP/DEP CON 128.35

CLEARANCE DELIVERY PHONE: For CD ctc Kansas City ARTCC at 913-254-8508.

RADIO AIDS TO NAVIGATION: NOTAM FILE COU.

MAPLES (L) VORTAC 113.4 MAP Chan 81 N37°35.45'

W91°47.31' 074° 8.9 NM to fld. 1374/6E. HIWAS.

KANSAS CITY

L-16G

IAP

