

BOWLING GREEN—WARREN CO RGNL (BWG)(KBWG) 2 SE UTC-6(-5DT) N36°57.87' W86°25.18'

ST LOUIS
H-5E, 9A, L-16J
IAP

547 B ARFF Index—See Remarks NOTAM FILE BWG

RWY 03-21: H6501X150 (ASPH) S-120, D-221, 2D-358

PCN 63 F/C/X/T HIRL 0.4% up SW

RWY 03: REIL. PAPI(P4L)—GA 3.0° TCH 44'.

RWY 21: REIL. PAPI(P4L)—GA 3.0° TCH 30'.

RWY 12-30: H3956X150 (ASPH) S-25.5, D-40 PCN 9 F/C/X/T MIRL

RWY 30: Thld dspclcd 349'.

SERVICE: S4 **FUEL** 100LL, JET A **LGT** ACTIVATE REIL Rwy 03 and Rwy 21; HIRL Rwy 03-21—CTAF. NSTD lighted wind indicator.

AIRPORT REMARKS: Attended continuously. Birds on and invof arpt. Class IV, ARFF Index A. 24 hr PPR for air carrier ops with more than 30 pax seats, call arpt mgr. Index B ARFF avbl on req. Rwy 12-30 sfc cond poor due to severe potholes 1200' upwind of Rwy 30 thld; 42' southwest of cntrln, longitudinal cracking and loss of fines. Rwy 12 markings faded. **CAUTION:** Rwy 30 thld and dspclcd thld markings faded and old markings still visible.

AIRPORT MANAGER: 270-842-1101

WEATHER DATA SOURCES: ASOS 127.825 (270) 843-8136.

COMMUNICATIONS: CTAF/UNICOM 123.0

RCO 122.2 (LOUISVILLE RADIO)

Ⓜ **MEMPHIS CENTER APP/DEP CON** 133.85

AIRSPACE: CLASS E.

RADIO AIDS TO NAVIGATION: NOTAM FILE BWG.

(H) **VORTACW** 117.9 BWG Chan 126 N36°55.72' W86°26.61' 026° 2.4 NM to fld. 568/2E.

VOR unusable:

001°-040° byd 10 NM blo 18,000'

041°-100° byd 10 NM blo 5,000'

101°-180° byd 10 NM blo 11,000'

181°-220° byd 10 NM

221°-240° byd 10 NM blo 10,000'

241°-255° byd 10 NM

256°-360° byd 10 NM blo 11,000'

TACAN unusable:

001°-040° byd 10 NM blo 18,000'

041°-100° byd 10 NM blo 5,000'

101°-180° byd 10 NM blo 11,000'

181°-220° byd 10 NM

221°-240° byd 10 NM blo 10,000'

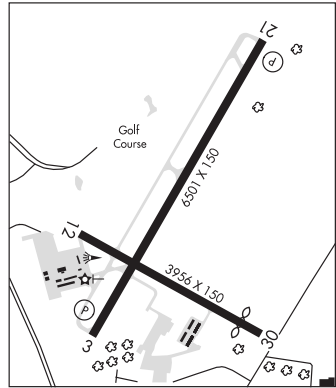
241°-255° byd 10 NM

256°-360° byd 10 NM blo 11,000'

NOORA NDB (LOMW) 236 BW N36°52.80' W86°28.90' 034° 5.9 NM to fld. 613/4W.

ILS 108.75 I-BWG Rwy 03. Class IB. LOM NOORA NDB. Glideslope unusable byd 6° either side of LOC course.

COMM/NAV/WEATHER REMARKS: To CNL IFR ctc Louisville FSS on 122.2.



BOWLING GREEN N36°55.72' W86°26.61' NOTAM FILE BWG.

ST LOUIS
H-5E, 6I, 9A, L-16J

(H) **VORTACW** 117.9 BWG Chan 126 026° 2.4 NM to Bowling Green—Warren Co Rgnl. 568/2E.

VOR unusable:

001°-040° byd 10 NM blo 18,000'

041°-100° byd 10 NM blo 5,000'

101°-180° byd 10 NM blo 11,000'

181°-220° byd 10 NM

221°-240° byd 10 NM blo 10,000'

241°-255° byd 10 NM

256°-360° byd 10 NM blo 11,000'

TACAN unusable:

001°-040° byd 10 NM blo 18,000'

041°-100° byd 10 NM blo 5,000'

101°-180° byd 10 NM blo 11,000'

181°-220° byd 10 NM

221°-240° byd 10 NM blo 10,000'

241°-255° byd 10 NM

256°-360° byd 10 NM blo 11,000'

RCO 122.2 (LOUISVILLE RADIO)

BOWMAN FLD (See LOUISVILLE on page 253)

BRECKINRIDGE CO (See HARDINSBURG on page 246)